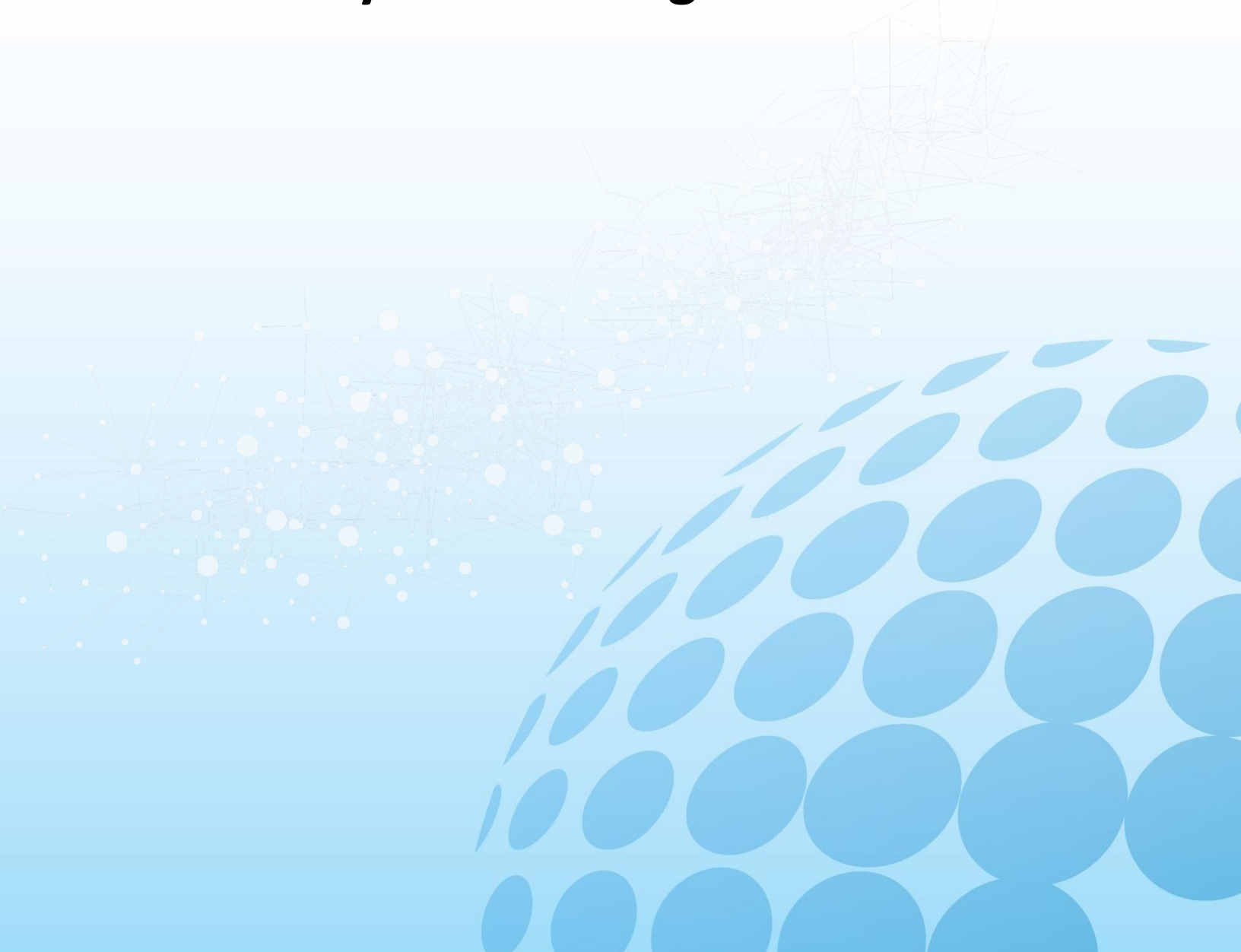


# Data Ecosystem Management Suite



| Category                  | Layer            | Function                   | Deliverables                      | Incl.                                       | Data Ecosystem Mgmt |                                    |                                   |                            |                          |
|---------------------------|------------------|----------------------------|-----------------------------------|---|---------------------|------------------------------------|-----------------------------------|----------------------------|--------------------------|
| Enterprise Data Architect | Data Discovery   | L1                         | Discover                          | Data Asset Inventory                        | ●                   | Data Ecosystem Metadata Management | Data Ecosystem Quality Management | Data Ecosystem Integration | Data Ecosystem Analytics |
|                           |                  | .a                         | Structured Data                   | Structured Data Asset Inventory             | ●                   |                                    |                                   |                            |                          |
|                           |                  | .b                         | Unstructured Data                 | Unstructured Data Asset Inventory           | ●                   |                                    |                                   |                            |                          |
|                           |                  | .c                         | Big Data                          | Hadoop File System Data Asset Inventory     | ●                   |                                    |                                   |                            |                          |
|                           | L2               | Ingest                     | Inventory of External Data Assets | ●   |                     |                                    |                                   |                            |                          |
|                           | Data Profiling   | L3                         | Profile                           | Semantic Metadata                           | ●                   |                                    |                                   |                            |                          |
|                           |                  | L4                         | Recognize                         | Business Domains, Taxonomies                | ●                   |                                    |                                   |                            |                          |
|                           |                  | L5                         | Classify                          | Global Object Identification                | ●                   |                                    |                                   |                            |                          |
|                           |                  | L6                         | Map                               | Business Ontologies                         | ●                   |                                    |                                   |                            |                          |
|                           |                  | L7                         | Compare                           | Data Comparison                             | ●                   |                                    |                                   |                            |                          |
|                           |                  | L8                         | Lineage                           | Flow Analysis, Impact Analysis              | ●                   |                                    |                                   |                            |                          |
|                           |                  | L9                         | Model                             | Master / Canonical Data Models              | ●                   |                                    |                                   |                            |                          |
| L10                       |                  | Glossary                   | Business Terms Analysis           | ●   |                     |                                    |                                   |                            |                          |
| L11                       | Search           | Enterprise Metadata Search | ●                                 |   |                     |                                    |                                   |                            |                          |
| L12                       | Monitor          | Change Monitoring          | ●                                 |   |                     |                                    |                                   |                            |                          |
| Data Quality Analyst      | Data Quality     | L13                        | Rules                             | Rules Repository                            | ●                   |                                    |                                   |                            |                          |
|                           |                  | L14                        | Metrics                           | Data Quality Metrics                        | ●                   |                                    |                                   |                            |                          |
|                           |                  | L15                        | Steward                           | RACI Matrix, Policies                       | ●                   |                                    |                                   |                            |                          |
|                           |                  | L16                        | Standardize                       | Codes, Reference Data, IDs                  | ●                   |                                    |                                   |                            |                          |
|                           |                  | L17                        | De-Duplicate                      | Duplicate Detection                         | ●                   |                                    |                                   |                            |                          |
|                           |                  | L18                        | Cleanse                           | Data Cleansing                              | ●                   |                                    |                                   |                            |                          |
|                           |                  | L19                        | Monitor                           | Quality Monitoring                          | ●                   |                                    |                                   |                            |                          |
|                           |                  | L20                        | Dashboards                        | Data Quality Dashboards                     | ●                   |                                    |                                   |                            |                          |
| MDM Architect             | Data Integration | L21                        | Move                              | Extract, Load, Transform                    | ●                   |                                    |                                   |                            |                          |
|                           |                  | L22                        | Enrich                            | Enrichment using 3 <sup>rd</sup> Party Data | ●                   |                                    |                                   |                            |                          |
|                           |                  | L23                        | Match                             | Master Data "Golden Copy" creation          | ●                   |                                    |                                   |                            |                          |
|                           |                  | L24                        | Link                              | Graphs, Triplestores                        | ●                   |                                    |                                   |                            |                          |
|                           |                  | L25                        | Measure                           | KPIs / Metrics                              | ●                   |                                    |                                   |                            |                          |
|                           |                  | L26                        | Visualize                         | Visualization Output                        | ●                   |                                    |                                   |                            |                          |
| Data Scientist            | Data Science     | L27                        | Synthesize                        | Create Synthetic Data for Testing           | ●                   |                                    |                                   |                            |                          |
|                           |                  | L28                        | Migrate                           | Data Migration to Hadoop and/or Cloud       | ●                   |                                    |                                   |                            |                          |
|                           |                  | L29                        | Analyze                           | Statistics / Predictive Models with R       | ●                   |                                    |                                   |                            |                          |
|                           |                  | L30                        | Distribute                        | Web Applications using REST API             | ●                   |                                    |                                   |                            |                          |