

GDPR

Regulatory Compliance

AUTOMATED DATA DISCOVERY

Global IDs' software helps large enterprises comply with GDPR regulatory requirements by automating the Data Discovery of Sensitive Data pertaining to EU Citizens.

The software builds a modern foundation for Data Privacy Initiatives by using machine intelligence to supplement traditional rule-based systems.

By operating at enterprise scale, with accuracy and performance, the software can quickly analyze large data landscapes and locate the data pertinent to GDPR Reporting.



DEADLINE : MAY 2018

ARE YOU READY?



PROBLEM

All organizations that store data pertaining to EU Citizens are required to comply with the General Data Protection Regulation (GDPR) by May 2018. To do so, organizations need to first locate the relevant data across their data ecosystem and then trace its flow across the IT environment.



SOLUTION

By scanning and classifying each database table and column across the data landscape, Global IDs' software creates a comprehensive list of GDPR Data Elements. Going further, the software then computes the subset of records corresponding to EU State Persons. This information is used to construct reports both for the Data Protection Officer and for Data Stewards, for presentation to regulators.



RETURN OF INVESTMENT

Companies face significant penalties (up to 4% of Annual Revenues) for non-compliance. By creating discipline around the issue of data privacy, organizations are able to avoid penalties, while at the same time, modernizing their data ecosystem.

UNIQUENESS

Global IDs Data Privacy Software is unique in the market. It provides:

1

Enterprise Scalability

The software was built to analyze and protect data ecosystems with 100,000+ databases.

2

Near 100% Automation

The software does not rely on humans to execute automated data protection workflows.

PRODUCTION-READY

The software has been engineered to follow the architectural and operational guidelines of large enterprises.

1 SECURITY POLICY COMPLIANCE

The software adheres strictly with enterprise security policies. It interrogates only those databases where access has been granted.

2 MINIMAL IMPACT

Tasks have minimal impact on database performance or query load. Monitoring tools have been used to verify that performance impact falls under 1%

3 NON-INVASIVE APPROACH

Global IDs' software is implemented in an "agentless" manner. There is no need for software to be installed on enterprise databases or servers.

4 MINIMAL RISK

The software operates in read-only mode. This means that it is not capable of making any changes to enterprise databases.

5 INTEROPERABLE

Global IDs' software is implemented with existing applications in the enterprise. A REST API is provided, allowing rapid information exchange with the software ecosystem. A library of data discovery workflows is delivered with the software. These can be invoked securely by other applications.

6 GDPR DOMAIN PACK

The software comes pre-packaged with 100+ GDPR sensitive data domains. These domains can be discovered automatically.

DATA PROTECTION

GDPR Compliance Reports allows organizations to demonstrate a systematic and comprehensive methodology to regulators.

DATA PROTECTION OFFICER'S DASHBOARD

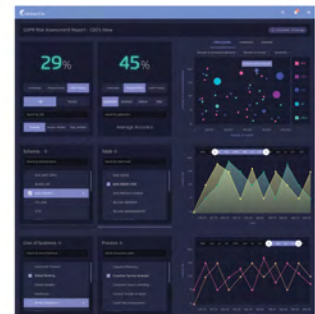
Data Protection Officers (DPOs) are required to demonstrate that their organizations are deploying tools and processes to comply with the specific requirements of GDPR.

The dashboard shows how the DPO can demonstrate the progress that the organization has made in systematically scanning the data ecosystem protecting data about EU citizens.

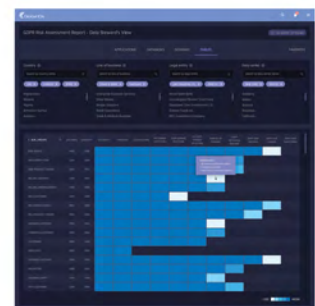
DATA STEWARDS REPORT

Data Stewards are required to prove that each application and database in the organization is in compliance with the specific requirements of GDPR. The report allows the Data Steward to demonstrate the detailed progress that the organization has made in systematically scanning the data ecosystem. Also shown are the specific steps required to detect data about EU citizens and the processes employed for protecting that data.

CDO/DPO VIEW



DATA STEWARD VIEW



Global IDs, based in Princeton, NJ, provides software for enterprise information management (EIM). Over the last 15 years, Global IDs has provided Data Management Software products to the world's largest companies. Our core product, the Global IDs Data Ecosystem Management Suite, addresses the core functional areas for managing enterprise information portfolios. For more information, please see our website at www.globalids.com

Address: 182 Nassau Street, Suite 202, Princeton, NJ 08542

Phone: (609)-683-1066

E-mail: info@globalids.com

Web: www.globalids.com

